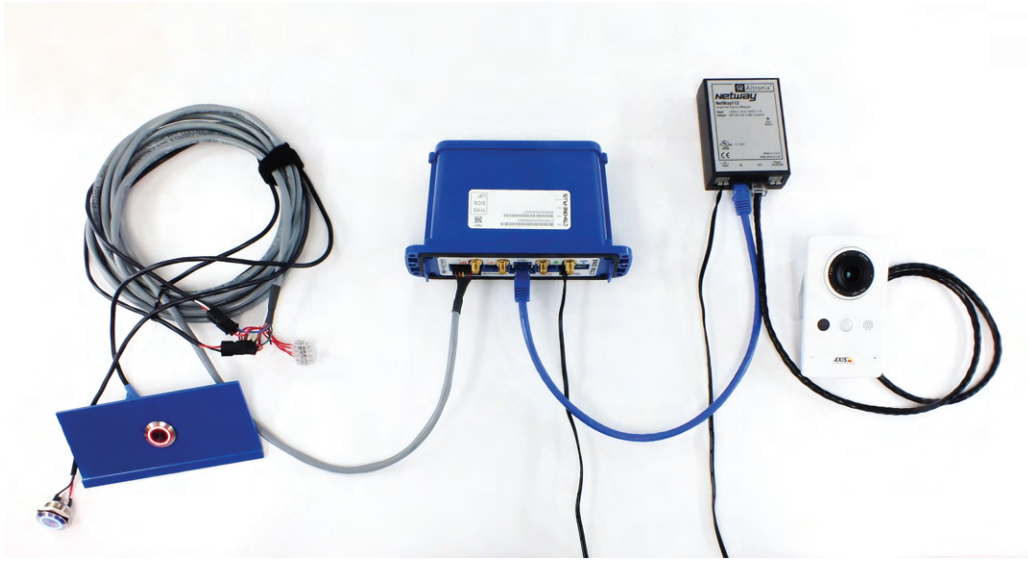


# CTM-ONE CAMERA APPLICATION OVERVIEW

## Overview

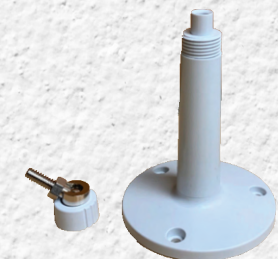
The CTM-ONE Wireless Gateway supports a camera application which can be used for drivers/operators to capture photos of specific events or as a dashcam. This kit allows the operator to trigger a picture by pressing one of the push-buttons. The application can be used for recording debris on the road, contaminated garbage or even current road conditions. The camera is connected and powered by a single Ethernet cable over PoE.



## Camera



Axis M1065-L Network Camera  
1000.0325



Axis T91A11 Camera Stand  
1000.0327

Photos are uploaded to the Cypress VUE platform and can be viewed as required. The photos are stored for up to 90 days, at which point they are removed from the server. The photos can be downloaded and saved during the 90 days for records.



# CTM-ONE CAMERA APPLICATION OVERVIEW



CTM-ONE Wireless Gateway



Altronix Netway 112 PoE Power Injector  
1000.0326

## Devices

The CTM-ONE Wireless Gateway is a rugged industrial device which offers a variety of inputs and outputs and can be powered inside a vehicle. It is the center piece of the camera application.

The PoE Power Injector provides a power connection to deliver the electrical power the camera needs to operate.

## Push-Buttons

Push-buttons can be installed to enable categorization of the photos taken with a maximum of 2 push-buttons. A solid light indicates that the photo was taken and will be queued for delivery. A blinking light indicates that there was an issue and the photo could not be taken. Each button will have a different colour light to help differentiate the different functions. The blue button is the primary function and the red button is the optional secondary function. The push-buttons are also designed to be mounted on panels within a vehicle.



Blue Push-Button Assembly  
1000.0322



Red Push-Button Assembly  
1000.0321



DC Power Cable for PoE Injector  
1000.0338



Serial GPIO Cable for Push-Button  
Assembly, 15ft  
1000.0323



Cat 5E Ethernet Cable  
1000.0177

## Additional Cables

In addition to the parts listed above, the CTM-ONE camera application will require a DC Power Cable for the PoE Power Injector, a Serial GPIO Cable for the Push-Button Assembly and one Cat 5E Ethernet cable to connect the camera to the PoE Injector, and to connect the PoE Power Injector to the CTM-ONE.

+1 (877) 985 2878

[www.cypress.bc.ca](http://www.cypress.bc.ca) // [support@cypress.bc.ca](mailto:support@cypress.bc.ca)

[@CypressSLTNS](https://twitter.com/CypressSLTNS) [f/CypressSolutionsInc](https://facebook.com/CypressSolutionsInc) [in/Cypress-Solutions-Inc](https://linkedin.com/company/Cypress-Solutions-Inc)



Cypress Solutions © | 3066 Beta Avenue | Burnaby, BC | V5G 4K4 | 604-294-4465